



June

# 2024 SMOKE SIGNAL

## Our Mission Statement

Sharing the love of Christ with ALL  
people.

Burnt Factory Church  
1943 Jordan Springs Road  
P. O. Box 399  
Stephenson, Virginia 22656  
burntfactory.org  
PH: (540) 667-4993

*"Let your light so shine before men that they may see your  
good works and glorify your Father who is in heaven."*  
Matthew 5:16



Pastor Shane Stanford shares a wonderful story about a light house. There was a captain of a battleship who in a dark storm one night saw a light in the distance.

The captain sent out a message to the other ship, "You need to shift your direction ten degrees to the south." And a quick message came back saying, "You need to shift your direction 10 degrees to the north."

The captain, incensed by this reply sends a second message, "I am the captain and I order you to shift ten degrees to the south." The reply comes back, "I'm a Seaman First Class and I need you to shift ten degrees to the north." The captain is very angry now and says, "I'm a battleship and I will not tell you again --- go ten degrees to the south!" And once again, a message comes back right away, "I'm a lighthouse. You have no other choice. Go ten degrees to the south!"

When the storms of life are raging, do you trust the lighthouse of Christ to steer you in the right direction? When you are unsettled and not quite sure which direction to turn; do you understand that Jesus is the light of the world and is ready, able, and willing to show you the way? A lighthouse is a point of reference; it is a safety net in a chaotic and dangerous world and Jesus wants to make sure we are looking toward his light and walking in that light.

What is your point of reference today? What are you keeping your eye gazed upon as you navigate rough seas and difficult passages? The prophet Jeremiah pleaded with Israel: "Please find what is your truth --- you are going in the opposite direction of what God is calling you to do." We hear time and time again, all through the Bible and especially from Jesus who says, "I am your point of reference. Trust in me and be not afraid" Jesus is our lighthouse!

Ten degrees south or ten degrees north --- depending on your reference point --- it can mean the difference between life and death. Choose life friends, choose Jesus --- trust the lighthouse of God! And remember this: God promises a safe landing, not a calm passage!



Pastor Steve



## June Birthdays

- 1<sup>st</sup> Marcia Darsie
- 2<sup>nd</sup> Madison Sommers  
Megan Bursey
- 3<sup>rd</sup> Naomi Buddenhagen
- 5<sup>th</sup> Norma Duvall
- 7<sup>th</sup> Sue Swimley
- 9<sup>th</sup> Hannah Heinlein  
Sam Melester  
Lucinda Lentz
- 10<sup>th</sup> Diana Smith
- 11<sup>th</sup> Tom Miiller
- 12<sup>th</sup> Bob Rodeffer  
Wade Bryant
- 15<sup>th</sup> Richard Henry
- 18<sup>th</sup> Tim Perrault
- 19<sup>th</sup> Megan Smith
- 21<sup>st</sup> Greg Powell  
Rylee Repine
- 22<sup>nd</sup> Mark Duvall
- 24<sup>th</sup> Carrie Fair  
Julia Boudier
- 25<sup>th</sup> Kim Bursey
- 27<sup>th</sup> Charlie Beaver  
Charlotte Teigan Goode
- 28<sup>th</sup> Becca Ratliff
- 30<sup>th</sup> Amy Jenkins  
Pat Dawson



## Happy Anniversary

- 2<sup>nd</sup> Jay & Harriet Hanke
- 8<sup>th</sup> Mark & Aimee Taylor
- 10<sup>th</sup> Lander & Paige Manuel
- 11<sup>th</sup> Sonny & Iris Sibert
- 14<sup>th</sup> Paul & Susie Gerometta
- 21<sup>st</sup> Randy & Karen Willis
- 19<sup>th</sup> David & Charlene Winter

## Remembering Buddy's Jokes

### Very Punny

I gave all my dead batteries away today...free of charge!



\*Pulled from the June 2021 Edition of Smoke Signal.

# Children's Ministry and Administration

June is here so that means summertime is in the air! And since roses are in bloom now, take some time to stop and admire their beauty and aroma. They are a gift from God! Summertime is full of fragrances and beauty, and we can see glimpses of God in all of it. I feel so blessed to look around and notice all the colors of blooms, birds, and skies, and to hear the sounds of crickets and locusts. It really does make you feel a deep connection to the creator. I also cannot wait to see the first appearance of lightning bugs! Nothing is better than summertime porch sitting, sweet tea and lightning bugs. God is certainly Good!

We are seeing some wonderful things happening in our church so far this year. I am so blessed to have a front row seat for all the missions, ministries, and activities of this amazing church family. God is up to something, and he is using his people! Are you hearing his call? If you are looking for something to be a part of, give me a call or stop by the office Tuesday, Wednesday, and Fridays 9-2. I'm here and can lead you in the right direction!

## Important!



Summertime means Vacation Bible School and Summer Camp!

**Mark your Calendars!**

- June 17-21** VBS from 6-8:30pm  
Ages 3yrs to 5<sup>th</sup> Grade, with Middle/High School Crew leaders!
- July 8-10** Summer Camp from 9am-1pm.  
Ages 1<sup>st</sup> Grade -5<sup>th</sup> Grade.  
The Theme is "What a Wonderful World"



## Burnt Factory Youth

*All youth grades 6-12 are invited to participate in youth events:*

**When:** June 13<sup>th</sup>

**Time:** 2-10 PM

**Where:** Youth Cottage

**What:** We are combining a full day of mission AND fun in one day! Youth will be volunteering at an assisted living place and then filling the freedge. Afterwards we will have pizza and a movie down at the shelter! So please plan to have each youth bring a camping chair/blanket.



Please RSVP to Miss Erin for any youth event  
[youth@burntfactory.org](mailto:youth@burntfactory.org) or text 540-535-5283

# CONDOLENCES

As many have experienced the loss of a loved one, please remember them in prayer:



- For the family of Jenny Hutchinson who claimed the promise of the resurrection. Jenny was Pastor Steve's cousin.
- For the family of Nancy Dillon who claimed the promise of the resurrection. Nancy was a friend of Pastor's Steve from a former church.
- For the family of Angie Farrell who claimed the promise of the resurrection. Angie was the long-time partner of Charles Roles.
- Jeannie Reid, wife of Paul Reid claimed her promise of the resurrection on May 14. They were past members of Burnt Factory who had relocated to Alabama some years ago.



Our soul waits for the LORD; He is  
our help and our shield.

Psalm 33:20

## Gardening

*“I went down to the grove of walnut trees and out to the valley to see the new spring growth, to see whether the grapevines had budded or the pomegranates were in bloom.”*

*Song of Solomon 6:11 NLT*



Spring gives us such pleasure as we see everything coming back to life, and it's a reminder of the new life that we have through Christ's resurrection. Gardening is a pleasure for most of us, but it is also an exercise and can lead to injuries. Raking, mulching, planting, trimming and digging are good physical activity yet can result in pain and stiffness in our neck, shoulder, elbow, wrist, knees and back if we over-extend ourselves. To enjoy the flowers, vegetables and fruits without pain try these tips from Dr. William Madosky, a St. Louis chiropractor.

- Treat gardening as a sport: Warm up and stretch the muscles before beginning.
- Be realistic: Plan your work carefully to avoid injury. Set a moderate pace and time schedule to allow enjoyment of the task and minimize potential injuries.
- Remember good body mechanics: When lifting heavy bags of dirt or mulch keep your back straight back, bend your knees, lift with the legs, and hold objects close to your body. If shoveling, lift the dirt and turn the entire body to empty it – don't twist.
- Change it up: Use different muscle groups and minimize the repetitive stress placed on joints and extremities by frequently changing activities.
- Use a cushion, stool, or small bench when weeding: The support helps reduce stress placed on knees and spine from gardening movements.
- Take frequent breaks: By stopping to stretch, getting a drink or just enjoying the progress every half hour, you minimize your chance of injury or dehydration.
- Stop gardening if fatigued or in pain: That “one last thing” when tired leads to injury. If pain occurs, stop! If pain persists, apply ice to the affected area for 15-20 minutes at a time to reduce inflammation. DO NOT USE HEAT – it increases the inflammatory process. If pain persists, contact the doctor.

# June 2024 Faith and Health Corner Cont'd

We can spend time in the garden appreciating the glory of God's creation, while caring for our body at the same time.

*As always praying for your health and well-being. Praying that today you will both be a blessing and blessed.*

*Theresa*

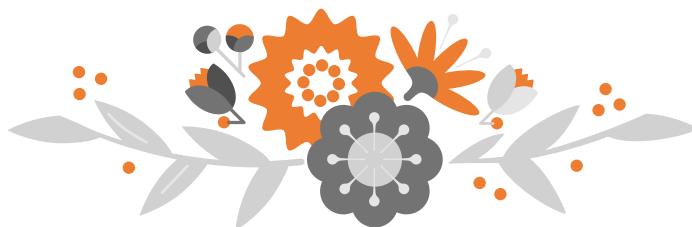
You can reach me at any time by e-mail at [tgilbert@afpdocs.com](mailto:tgilbert@afpdocs.com) or [theresahgilbert@gmail.com](mailto:theresahgilbert@gmail.com) or by phone at (540) 247-5612

As your faith community nurse, I am here to serve as a bridge to better health, meeting the wholistic healing mission of the church by partnering with the pastor as a healer of the spirit, mind and body.



## New Women's Group Ministry

On June 15 at 10 am in the Fellowship hall, there will be a time of gathering for our new women's ministry group. All women and friends of Burnt Factory ladies are welcome to attend and learn more about how we are moving forward in our women's ministry programs. We have exciting news and wonderful ideas!





## Martha Ludtke Named Prom Queen

On Friday, May 17<sup>th</sup>, Martha Ludtke was voted Prom Queen during her Prom at English Meadows. Martha has been living at English Meadows for around 6 months. She has shown her kindness and gratitude to everyone there. When her daughter, Susie Gerometta, asked her if she was ever a Prom Queen before, Martha answered no but it was never too late! This speaks to her great personality.



### **Have you given your email address to Keith Roberts, yet?**

Pastor Steve has special notices he needs to send to those who attend Burnt Factory. The notices will include not only prayer concerns, but also schedule changes during bad weather.

Keith keeps an email list in his computer for just such purposes. Your email address is protected, and emails are sent, recipients not disclosed, to protect your privacy.

Kindly send your email address to Keith Roberts at [john.k.roberts@comcast.net](mailto:john.k.roberts@comcast.net) with the message:

“ADD ME TO THE CHURCH EMAIL LIST”

### **Would you like to receive the Smoke Signal Newsletter by email?**

Kindly send an email to Becca Ratliff at [beccalea.ratliff@gmail.com](mailto:beccalea.ratliff@gmail.com) with a subject:

“Add me to the Smoke Signal Newsletter email distribution”





## Greetings from the Outreach Team!

### The Outreach Mission Statement

1 Peter 4:10-11 *“Each of you should use whatever gift you have received to serve others, as faithful stewards of God’s grace in its various forms so that in all things God may be praised through Jesus Christ.”*



June is the beginning of our *Mission Spotlight* series. We will shine a light on each of our mission areas to update and inform the congregation about what Outreach is doing and where you might want to become involved or just lend a hand. In our first mission area spotlight we will focus on **Project Esperanza**.

Caitlin McHale was a 2003 graduate of James Wood High School and a student at Virginia Tech when she travelled with other students to the Dominican Republic (D.R.) as a volunteer. In 2005, after meeting the people and particularly the children living and working on the streets in Puerto Plata, Dominican Republic she and another student Kristin Preve, founded the service organization Project Esperanza. Esperanza means hope. Caitlin and Kristin learned that a great number of the children they encountered were young boys from Haiti who were in the Dominican Republic working to support their families back in Haiti. Most didn’t go to school because they had to work. Project Esperanza began in service to aid these children.

Today, Project Esperanza includes two schools that are specifically designed for Haitian immigrant children in the Dominican Republic. They have a group home for vulnerable youth and young adults and provide aid to families in the communities where they work. They also run a community development program in collaboration with two universities. Caitlin, now Caitlin Floreal, has a family of her own and lives with them in the Dominican Republic.

Project Esperanza is an organization based on the teachings of Jesus Christ. All their efforts are toward loving their neighbors as they love themselves and to take care of orphans, widows, and strangers. Bible study and devotions are written into the school curriculum.

Burnt Factory Church has a years long association with Project Esperanza. We have sent mission teams to the D.R. to work with Caitlin and the school. Our church, through the Outreach ministry, donates \$2700.00 to them annually to support the school and sponsor students. Each of the 275 students requires sponsoring to attend the school.

A Winchester Star article from May 1, 2024 interviewed Caitlin and highlighted their most recent need for donations to repair the school’s van, a gift to the school from Burnt Factory Church several years ago, and to fix a roof leak in the school cafeteria. In response to the article, Pastor Steve requested approval from the Servant’s Board to present a check for \$4,000.00 to the school. Caitlin’s mother Katherine McHale, who lives in Frederick County, accepted the gift on their behalf. A photo ran in the Star on May 24 of our presenting the check to Mrs. McHale.

If you would like to learn more about Project Esperanza, you can go to their website at: <https://esperanzameanshope.org/about/>. You may donate through the website or you can mail donations via Caitlin’s mother to 1291 Valley Mill Road, Winchester, VA 22602.



## Outreach Team Update Cont'd



\*\*\*\*\*

The official start to summer is June 20<sup>th</sup> this year. I think the abundance of fresh fruit and vegetables is the best the part of this season. If you have a garden with a bumper crop of fruit and or veggies, please consider donating the extra to one of the neighborhood free fridges (Freedge). There are two in Winchester: 419 North Cameron St. (Our Health Campus) & 102 Montague Ave. (Montague Ave. UMC), and one in Stephens City: 700 Aylor Rd. (Abundant Life Church). You may drop off any time at your convenience. We have declared the second Wednesday of each month to be "Fill the Freedge Day". We ask everyone to drop something off to one of the Freedges on this day. For guidelines and a list of desired items go to the CCAP website. The link is here: <https://www.ccapwinchester.org/about-3>. In this simple and easy way, we can help feed hungry mouths in our own community.

**Thank you to everyone who placed their donations in the bins in the Narthex in May for The Laurel Center and Bright Futures. The recipients were very grateful for your generous gifts!!**

If you would like to find out more about our Outreach efforts you can contact me or attend one of our meetings. We meet the first Thursday of the month in January, March, May, July, September and November. *Our next meeting is Thursday, July 11, at 7 p.m. in the lower cottage. (Please note we have moved the meeting to the 11<sup>th</sup> as the 1<sup>st</sup> Thursday of the month falls on the 4<sup>th</sup> of July.)*

Grace and Peace,

Sharon Woodard, Outreach Chair  
sfwoodard111@gmail.com



## CCAP Corner

### June 2024

CCAP, the Congregational-Community Action Project, is a cooperative ministry of area churches and one synagogue serving Winchester and Frederick County that have joined together to provide financial, material and supportive assistance to people in need. CCAP is located at 112 and 106 S. Kent Street.

Our next **QUARTERLY CCAP COLLECTION** will be in July. We will be collecting new Men's boxer briefs in sizes M, L, and XL, white T-shirts in all sizes except small and Men's white socks. More details will be in the July Newsletter and the Church Bulletin.

**VOLUNTEERS are NEEDED to work in the Clothing House this summer. The house is open to clients Mon, Tues and Thurs each week from 9-12, volunteer hours can be flexible if needed. Kathy Dixon, Cheryl Jones and I volunteer weekly at the house and would love to show you how we help our clients and enjoy working with our fellow volunteers. It's usually a great time for mission work, fellowship and sharing God's Love.**

**CCAP VOLUNTEER TEAM** – Our church's CCAP volunteer team is meeting the 4<sup>th</sup> Tuesday of each month to restock the Pantry. We worked on May 28<sup>th</sup> to do some restocking and cleaning in the Pantry area. We worked from 5-6:30. If you are interested in helping on this team, please let me know.

**CCAP is the perfect place to REDUCE, REUSE, AND RECYCLE your clothing!! We need the following gently used items:**

- Summer clothes for baby thru adult sizes; Tennis shoes (Toddler thru adult size); men's belts and women's purses,
- New socks and underwear for toddler through adult,
- Men's Jeans - all sizes, Men's regular T-Shirts, Men's Shorts sizes 30-38; & Women's Jeans - size 2 thru 6,
- **Adult** Backpacks & gently used/clean linens (sheets, pillowcases, blankets, & towels),

**Donations may be dropped off Monday-Friday between 9am and 2pm at 112 S. Kent St. Call CCAP at 540-662-4318 for a scheduled donation drop off if these hours don't work with your schedule.**

#### **UPCOMING EVENTS at CCAP:**

**June/July** - 50 Donations to celebrate **50** Years – our church is collecting underwear and socks in July

**August 24** – 4<sup>th</sup> Annual Bike Tour – all riders are welcome and teams of volunteers are needed to work the rest stops.

**Sept 4** – Golf for CCAP Tournament – 18 Hole, 4 Person Scramble

**October 24** - 50<sup>th</sup> Birthday Gala for CCAP at the GW Hotel – more information to follow

**3 NEIGHBORHOOD FREEDGES:** Community refrigerators open **24 hrs a day; 419 N Cameron St, 700 Aylor Rd (Abundant Church) and 102 Montague Ave.** CCAP has partnered with Our Health, Valley Health, and local restaurants to reduce food insecurity and food waste in Winchester. You can drop off and share any extra, fresh produce or items you do not want to go to waste. Your food can be dropped off directly to the refrigerator at any time.

Patty Leonard – Outreach CCAP Rep

“Come to me, all you who are weary and burdened, and I will give you rest. <sup>29</sup> Take my yoke upon you and learn from me, for I am gentle and humble in heart, and you will find rest for your souls. <sup>30</sup> For my yoke is easy and my burden is light.”

Matthew 11:28-30

## Holy Holy Holy

Reginald Heber  
(1826)

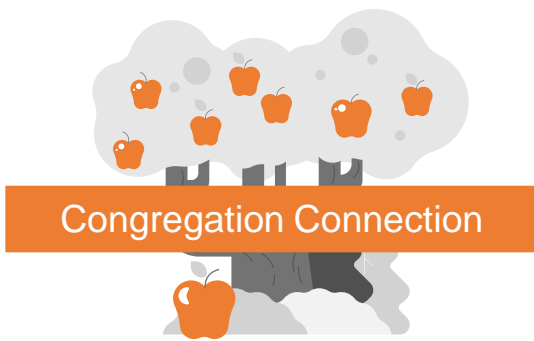


## Chorus Spotlight

1 Holy, holy, holy! Lord God Almighty!  
Early in the morning our song shall rise to  
Thee;  
Holy, holy, holy! merciful and mighty!  
God in three Persons, blessed Trinity!

2 Holy, holy, holy! all the saints adore Thee,  
casting down their golden crowns around  
the glassy sea;  
cherubim and seraphim, falling down  
before Thee,  
which wert and art and evermore shalt be.





**Name:** Jody Dorsey

**Hometown:** Stephenson, VA

**Time attending Burnt Factory Church:** 14 years

**What service do you regularly attend?** 8:30 am

**What would you encourage others to get involved with?** There are so many things in which to get involved. Prayer chain, Choir, Meet and Eat group, which is a great way to meet and get to know your church family.

**Favorite part of Burnt Factory Church:** The first time I visited; I was so warmly welcome by a large number of people. This made me feel at home. This is why I enjoy being a greater at the 8:30 services.

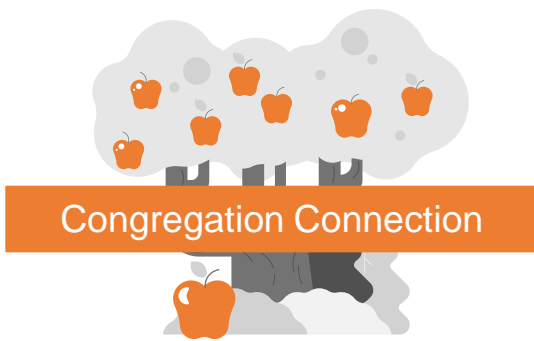
**Favorite hymn:**

***How Great Thou Art***

*Then sings my soul, my Savior God to Thee  
How great Thou art, how great Thou art*

***The Spirit Song***

*Oh, let the Son of God enfold you with his Spirit and his love; Let him fill your heart and satisfy your soul*  
*Oh, let him have the things that hold you, and his Spirit, like a dove, Will descend upon your life and make you whole*  
*Jesus, O Jesus, come and fill your lambs*  
*Oh, come and sing the song with gladness as your hearts are filled with joy*  
*Lift your hands in sweet surrender to his name*  
*Oh, give him all your tears and sadness, give him all your years of pain, And you'll enter into life in Jesus' name*  
*Jesus, O Jesus, come and fill your lambs*  
*Jesus, O Jesus, come and fill your lambs*  
*Oh, let the Son of God enfold you with his Spirit and his love; Let him fill your heart and satisfy your soul*  
*Oh, let him have the things that hold you, and his Spirit, like a dove, Will descend upon your life and make you whole*  
*He'll descend upon your life and make you whole*



# Continued

## Favorite scripture:

### *Psalm 23*

The LORD is my shepherd; I shall not want.

<sup>2</sup> He maketh me to lie down in green pastures: he leadeth me beside the still waters.

<sup>3</sup> He restoreth my soul: he leadeth me in the paths of righteousness for his name's sake.

<sup>4</sup> Yea, though I walk through the valley of the shadow of death, I will fear no evil: for thou art with me; thy rod and thy staff they comfort me.

<sup>5</sup> Thou preparest a table before me in the presence of mine enemies: thou anointest my head with oil; my cup runneth over.

<sup>6</sup> Surely goodness and mercy shall follow me all the days of my life: and I will dwell in the house of the LORD for ever.

### *John 14 1-10*

“Do not let your hearts be troubled. You believe in God; believe also in me.

<sup>2</sup> My Father's house has many rooms; if that were not so, would I have told you that I am going there to prepare a place for you?

<sup>3</sup> And if I go and prepare a place for you, I will come back and take you to be with me that you also may be where I am.

<sup>4</sup> You know the way to the place where I am going.”

<sup>5</sup> Thomas said to him, “Lord, we don't know where you are going, so how can we know the way?”

<sup>6</sup> Jesus answered, “I am the way and the truth and the life. No one comes to the Father except through me.

<sup>7</sup> If you really know me, you will know my Father as well. From now on, you do know him and have seen him.”

<sup>8</sup> Philip said, “Lord, show us the Father and that will be enough for us.”

<sup>9</sup> Jesus answered: “Don't you know me, Philip, even after I have been among you such a long time? Anyone who has seen me has seen the Father. How can you say, ‘Show us the Father’?”

<sup>10</sup> Don't you believe that I am in the Father, and that the Father is in me? The words I say to you I do not speak on my own authority. Rather, it is the Father, living in me, who is doing his work.

# June 2024 Calendar

Date/Time		Event
Sun 2 <sup>nd</sup>	8:30 AM	In-Person Worship
	9:45 AM	Sunday School
	11:00 AM	In-Person Worship
Tues 4 <sup>th</sup>	5:30 PM	Praise Team Practice
	6:30 PM	Choir Practice
Wed 5 <sup>th</sup>	9:30 AM	Pastor's Office Hours
Thurs 6 <sup>th</sup>	6:30 PM	Boy Scouts Troop 63
Sun 9 <sup>th</sup>	Graduation Sunday	
	8:30 AM	In-Person Worship
	9:45 AM	Sunday School
	11:00 AM	In-Person Worship
Tue 11 <sup>th</sup>	12:00 PM	2/4 BLT
	5:30 PM	Praise Team Practice
	6:30 PM	Choir Practice
Wed 12 <sup>th</sup>	No Pastor's Office Hours	
Thurs 13 <sup>th</sup>	6:30 PM	Boy Scouts Troop 63
Sun 16 <sup>th</sup>	Father's Day Services	
	8:30 AM	In-Person Worship
	9:30 AM	Blood Pressure Checks
	9:45 AM	Sunday School
	11:00 AM	In-Person Worship

Date/Time		Event
Mon 17 <sup>th</sup>	6:00 PM	VBS
Tues 18 <sup>th</sup>	6:00 PM	VBS
Wed 19 <sup>th</sup>	9:30 AM	Pastor's Office Hours
	6:00 PM	VBS
Thurs 20 <sup>th</sup>	6:00 PM	VBS
Fri 21 <sup>st</sup>	6:00 PM	VBS
Sat 22 <sup>nd</sup>	10:00 AM	Intentional Prayer Group
Sun 23 <sup>rd</sup>	8:30 AM	In-Person Worship
	9:45 AM	Sunday School
	11:00 AM	In-Person Worship
Tue 25 <sup>th</sup>	12:00 PM	2/4 BLT
	5:30 PM	Praise Team Practice
	6:30 PM	Choir Practice
Wed 26 <sup>th</sup>	9:30 AM	Pastor's Office Hours
Thurs 27 <sup>th</sup>	6:30 PM	Boy Scouts Troop 63
Sun 30 <sup>th</sup>	8:30 AM	In-Person Worship
	9:45 AM	Sunday School
	11:00 AM	In-Person Worship

For more info, view the calendar on our website:

[CalenderNew](#) | [Burnt Factory Church](#)